



Unison Joints innovative design approach and commitment to solid engineering practices has contributed to our position as a leader in the Australian market and has earned it a strong international reputation. Capable of providing for a broad variety of Expansion Joints, the Unison Group can design and manufacture a variety of specialised building and civil products.

Our current product range includes Movement Joints designed to be easily integrated with various structural elements, both internal and external; all flooring & paving, walls, panels, ceilings, facades & roofs.

Unison's architectural joints and associated components provide a transition across movement gaps in structures. These gaps require flush-mounted, trafficable surfaces with edge protection; they often need fire rating & waterproofing whilst catering for shrinkage, thermal and seismic movement. Unison Joints can provide all of these and more.

We have been involved in:

- Airport Terminals
- Museums
- Hospitals
- Grandstands
- Multilevel Carparks
- Supermarkets
- Department Stores
- Major Shopping Centres
- Theatres & public buildings

At Unison we pride ourselves on customer service and client satisfaction with our commitment to excellence being recognised on many prominent projects through Australiasia.

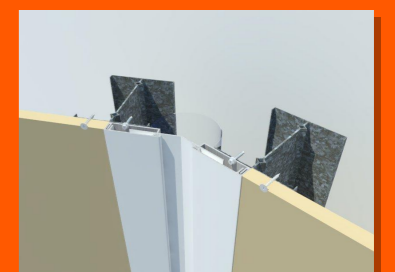
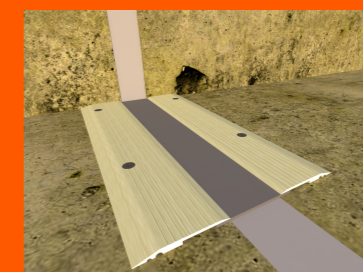
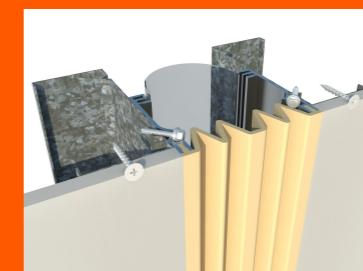
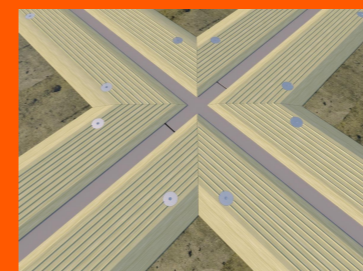
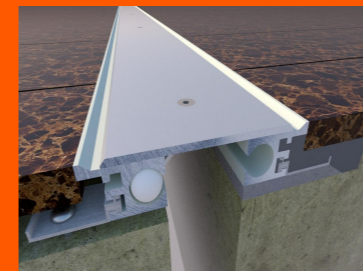
Our staff are available for individual consultations to assess your design and installation requirements and data sheets are available for detailing product movement parameters and specifications.



THE ART OF COVERPLATES



unison[®]
JOINTS



www.unisonjoints.com.au

2/282 New Cleveland Road, Tingalpa, QLD, 4173, Brisbane, Australia

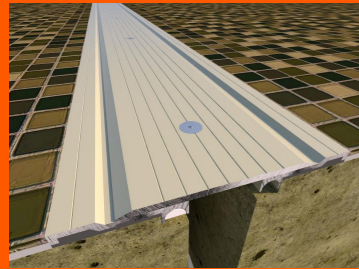
t:(+617) 3907 0500 f:(+617) 3907 0511, info@unisonjoints.com.au

PRODUCTS

THE ART OF COVERPLATES



unison
JOINTS



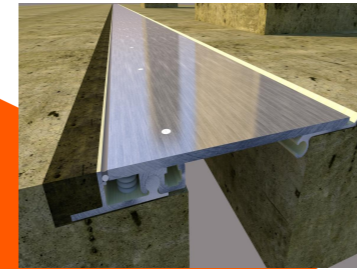
Flexo D

- Low profile
- Horizontal/Vertical/transverse movement
- Retrofit applications
- Anodised aluminium, stainless steel cover



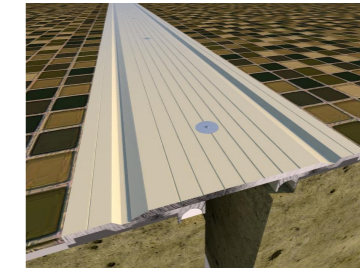
Designer's D

- Low profile
- Concealed fixings
- Horizontal/Vertical/transverse movement
- Anodised aluminium, stainless steel cover



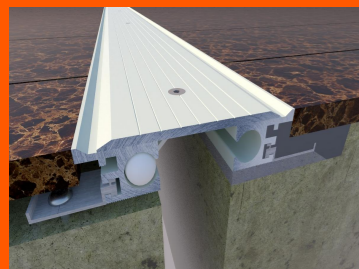
SeiMax By

- Seismic carpark system
- Extra heavy duty
- Horizontal/Vertical transverse movement
- Thermal&seismic Movement



Flexo D

- Low profile
- Horizontal/Vertical transverse movement
- Retrofit applications
- Anodised aluminium, stainless steel cover



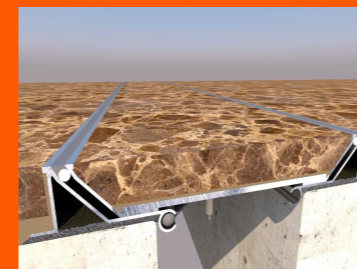
Flexo C

- Commercial/public structures
- Concealed fixings
- Compatible with most floor finishes



Designer's T

- Concealed fixings
- Horizontal/Vertical transverse movement
- Terrazzo, marble floor finish



SeiMax T

- Seismic floor joint
- Thermal&seismic movement
- Terrazzo, marble, pavers & other thick floor finishes



Aquo P

- High movement capacity
- Continuous Weatherseal
- Civil, commercial & public structures
- Ideal for Carpark&Stadium
- Simple direction changes
- UV stable
- Inert to most spillages



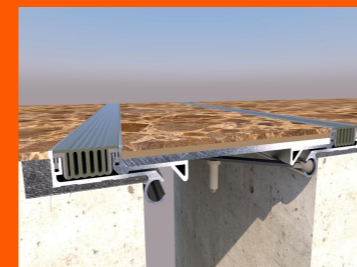
Brawny C

- Extra heavy duty
- 'No Bump' traffic transition
- Commercial/public structures
- Heavy traffic areas
- Retrofit coverplate option
- Stainless steel or aluminium coverplate



Flexo CHT

- Concealed fixings
- Horizontal/Vertical/transverse movement
- Commercial, retail, hospital, university
- Seismic capacity
- Anodised aluminium



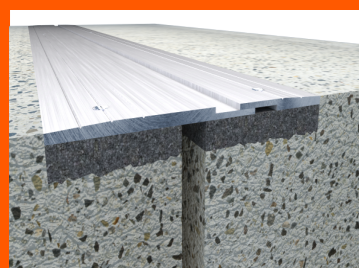
SeiMax DX

- Seismic floor joint
- Weather & pathogenic seal
- No bump transition
- Thermal&seismic movement



Flexo CS

- Commercial/public structures
- Concealed fixings
- Compatible with most floor finishes
- Curved Installation



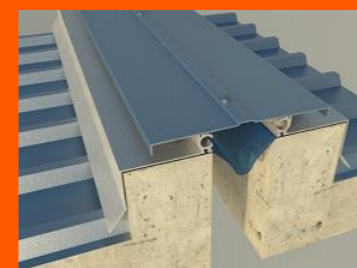
Designer's MF

- Anodised aluminium
- Supermarket & Retail areas
- 'Slab on ground' application



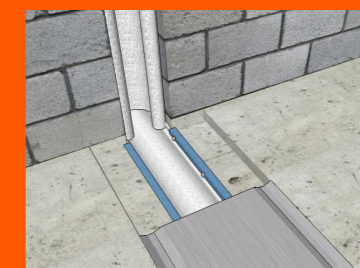
Morpho T

- Architectural floor seals
- Weather & pathogenic seal
- Food prep, hospitals commercial buildings
- Colour range available
- Terrazzo, marble floor finish



SeiMax R

- Seismic roof joint
- Anodised/mill/powdercoated finish
- Primary&secondary weatherseal
- Thermal&seismic movement



Pyrotx B

- Blanket movement joint seal
- High movement capacity
- Max. fire rated gap
- 2 Hour Rating



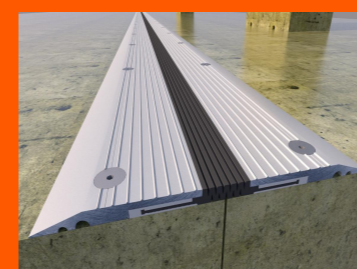
Morpho DL

- Architectural floor seals
- Weather & pathogenic seal
- Food prep, hospitals commercial buildings
- Colour range available



Integrated System

- Hospital specially developed
- Weather & pathogenic seal
- Colour range available



Brawny NC

- Construction joint
- Cold joint
- Horizontal/Vertical transverse movement



Brawny N Flush

- For weathersealing commercial carparks
- Heavy wear applications
- Inert to most spillages