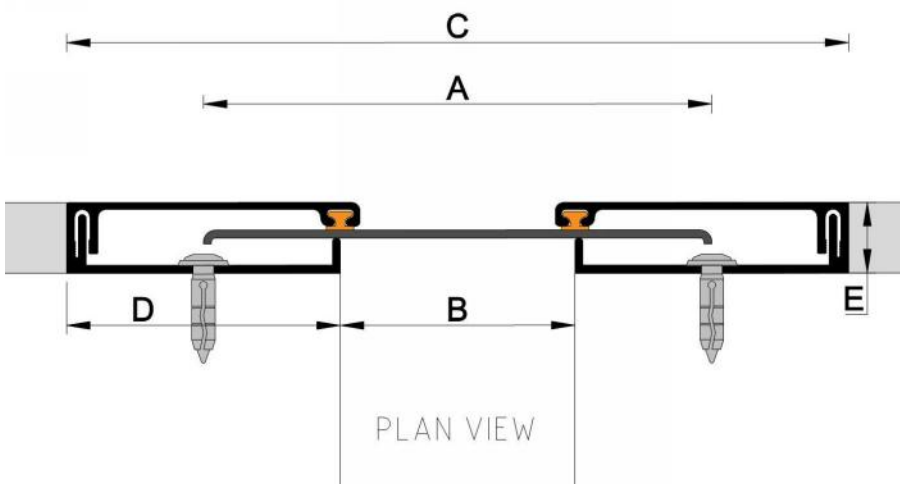
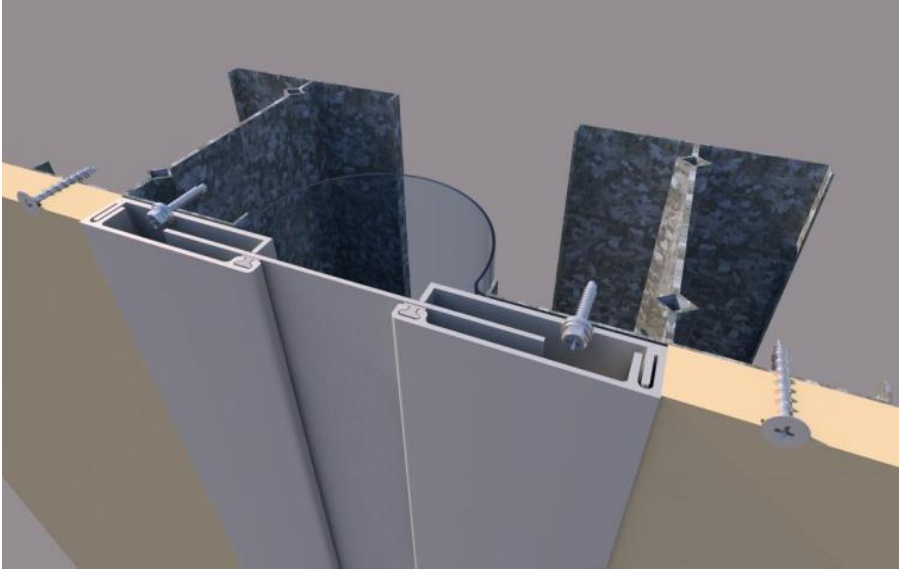


Vertos P

Coverplate EJs for Walls

Vertos P: The VtP is a coverplate-type wall expansion joint system. It is designed to be integrated with finishes such as plasterboard, render, aluminium-panel, and others. VtP can be installed in walls or ceilings internally or externally. Where structural movement joints are designed into corners, obtuse or acute angles can be accommodated. The system has adequate seismic function. It has an optional PVC gland for external applications. VtP can be powder-coated to a colour option, or supplied in a stainless-steel finish.



Vt P

Previous Model No: UP



Performance

- Concealed fixings
- Seismic movement
- Colour range available

Standard Length

3.6m

Standard Finish

Anodised Aluminium

Cover Plates



Options



Product	A: Coverplate		B: Gap				C: Exposed Width		
	Width	Thick	Min.	Mid.	Max.	Mvmt.	Min.	Mid.	Max.
Vt130P	130	1.6	12	67	122	110	152	165	262
Vt150P	150	1.6	32	87	142	110	172	205	282
Vt180P	180	1.6	62	117	172	110	202	205	312
Vt220P	220	1.6	102	157	212	110	242	297	352
Vt300P	300	1.6	182	237	292	110	322	137	432
Vt90PN	90	1.6	30	55	80	50	112	137	162
Vt110PN	110	1.6	50	75	100	50	132	137	182
Vt130PN	130	1.6	70	95	120	50	152	177	202
Vt150PN	150	1.6	90	115	140	50	172	137	222
Vt90PNS	90	1.6	30	55	80	50	112	137	162

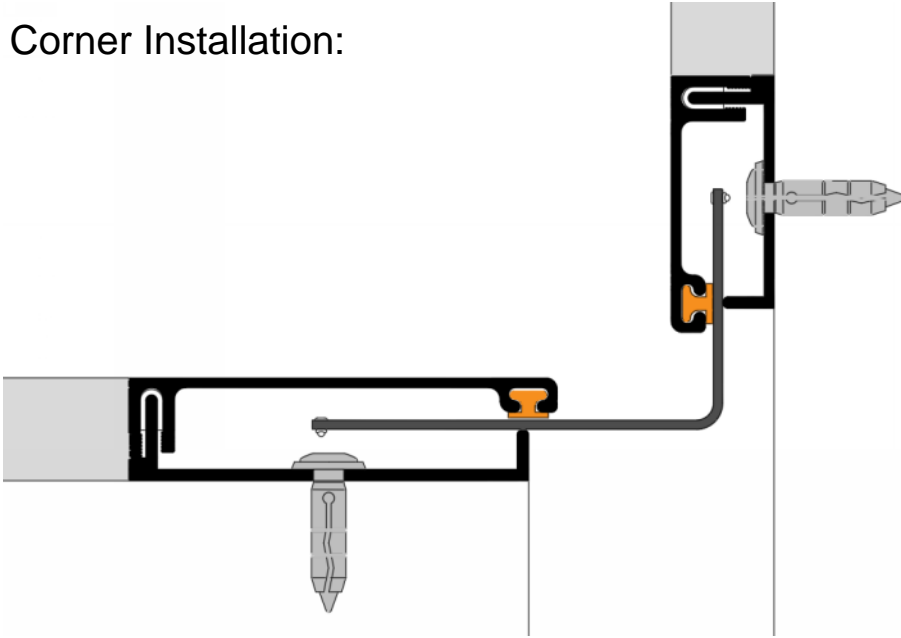
Block Out: 70D x 18E (40D x 18E for Vt PN)

Page 1 of 2

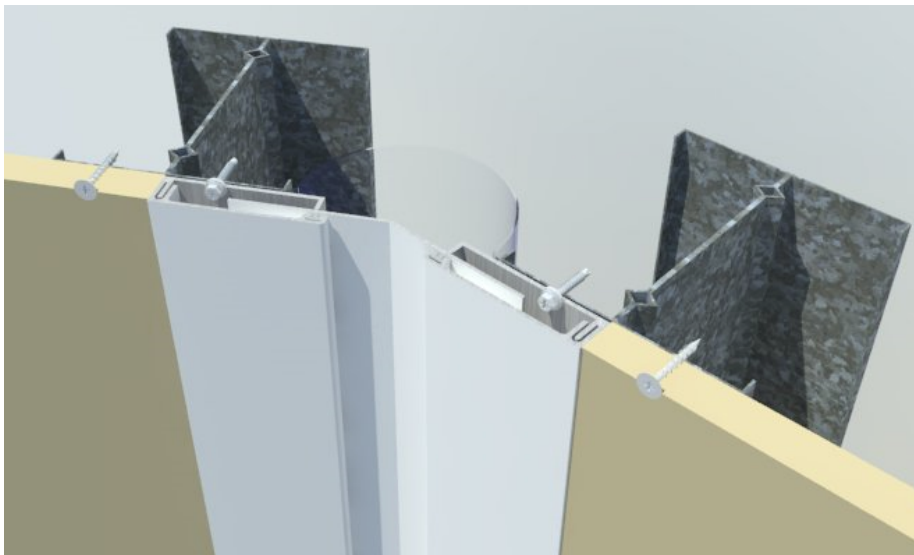
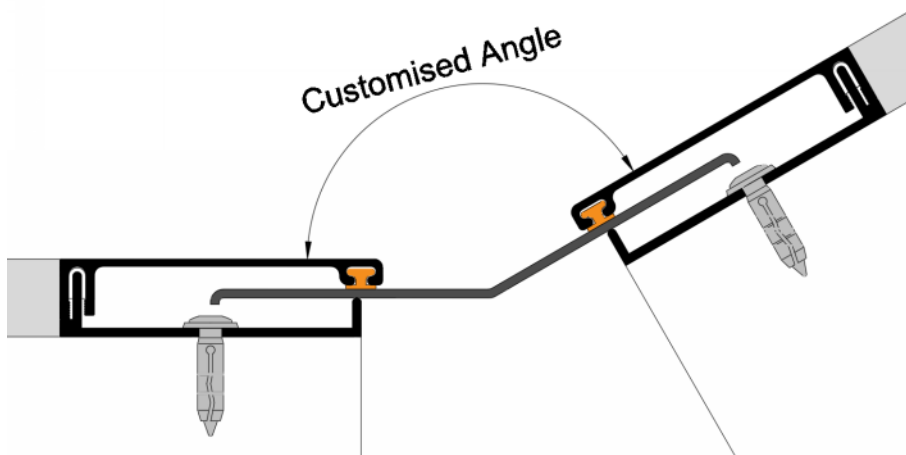
Disclaimer: All design rights reserved. Design and specifications are subject to change without notice. The manufacturer does not accept liability where the material on these pages is misconceived, exploited, or lacks conformity. The intention of this information is to provide a reasonable description of products, procedures and capabilities. Rev.5

Vertos P Coverplate EJs for Walls

Corner Installation:



Customised Installation:



Vt P

Previous Model No: UP



Performance

- Concealed fixings
- Seismic movement
- Colour range available

Standard Length

3.6m

Standard Finish

Anodised Aluminium

Cover Plates

Clear Anodised



Stainless Steel



Options

Powder Coat



Colour Anodised



Fire Rating



Water Resistant

