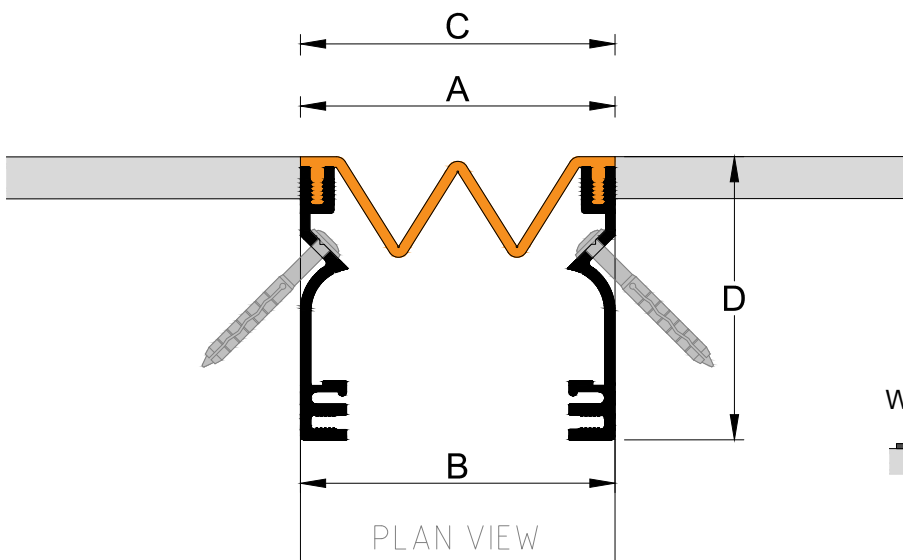
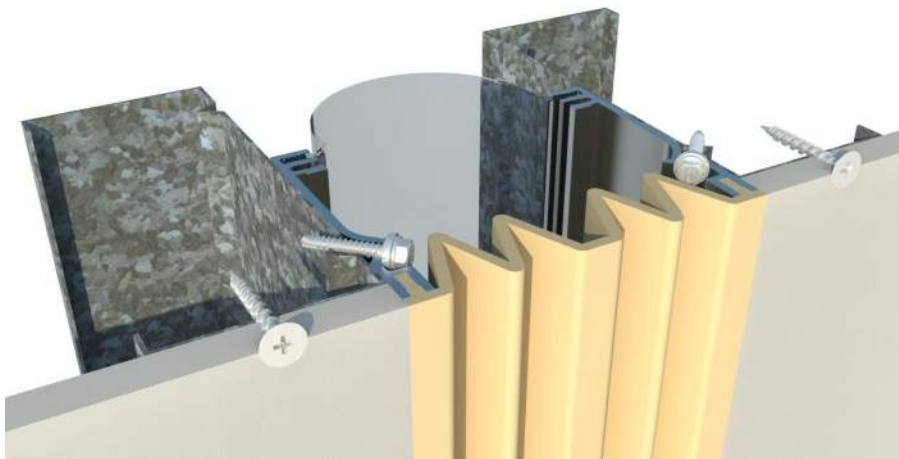


# Vertos S Thermoplastic Seal EJs for Walls

**Vertos S:** Wall to wall expansion joint system uses a combination of extruded-aluminium retainers, and extruded thermoplastic cover. The Vt S has high movement with seismic capability. Can be integrated with most wall finishes. A secondary PVC seal is used for external applications. Vt S spitter-boots can be supplied as an accessory for drainage. Thermoplastic colour options are available, and the system can be adapted for wall- corner use.



## Vt S

Previous Model No: UASF



### Performance

- Facade Joint
- Santoprene primary seal
- Optional secondary waterproof seal
- UV stable
- Colour range available

### Standard Length

4.8m

### Standard Finish

Mill Finish Aluminium

### Colour Options

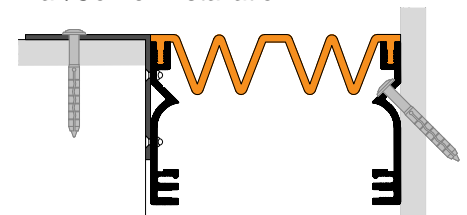
- Black
- Grey
- Beige
- Other colour options available

### Options

Wall/Corner Installation



Wall/Corner Installation:



Product	A: Seal		B: Gap				C: Exposed Width		
	Width	Thick	Min.	Mid.	Max.	Mvmt.	Min.	Mid.	Max.
Vt50S	50	2.5	25	73	120	95	25	73	120
Vt100S	100	2.5	45	120	210	185	45	138	230
Vt200S	100x2	2.5	90	240	420	370	90	145	460

**Block Out: 68D**

Disclaimer: All design rights reserved. Design and specifications are subject to change without notice. The manufacturer does not accept liability where the material on these pages is misconceived, exploited, or lacks conformity. The intention of this information is to provide a reasonable description of products, procedures and capabilities. Rev.6